

UPIb-2 (Clone 3D24)

6/17/2016

Description Mouse monoclonal Antibody

Batch prepared 10/01/2014

Antigen 40-QHSLYPLLEA-49 of first small extracellular loop of mouse UPIb

```

1   MAKDDSTVRCFQGLLIFGHVIVGMCGIALTAECIFFVSDQHSLYPLLEATNNDIFGAAWIGMFVGICLFCLSVLAIVGI   80
      TM1                                3D24                                TM2
81   MKSNRKILLAYFIMMFIVYGFEVASCITAATQRDFFTTNLFLKQMLMRYQNNSPPTNDDEWKNNGVTKTWDRLMLQDHCC   160
      TM3
161  GVNGPSDWQKYTSAFRVENNDADYPWPRQCCVMDKLKEPLNLDACKLGVPGYYHSQGCYELISGPMDRHAWGVAVFGFAI   240
      TM4
241  LCWTFWVLLGTMFYWSRIEY   260
  
```

Isotype IgG

Antigen species Mouse

Species reactivity mouse, human

Volume 100 ul (concentrated supernatant)

Application Notes

Immunofluorescence-paraffin: 1/10-50*

Western blot: 1/100-500 dilution*

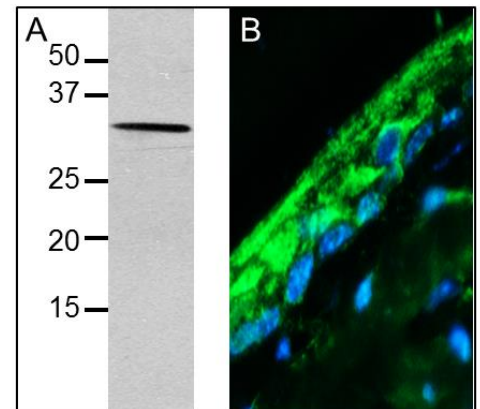
* Optimal dilutions should be determined by the user.

Storage Instructions

Store at 4°C. For long-term storage, aliquot and store at -20°C.

Reference & Publications

Unpublished



- A. Western blot analysis of total cell lysate from mouse bladder urothelium using UPIb (Clone 3D24) Mouse MAb.
- B. Immunofluorescence (IF) analysis of formaldehyde-fixed, paraffin-embedded mouse bladder using UPIb (Clone 3D24) Mouse MAb.