

UPIb-1 (Clone 2N23)

6/17/2016

Description Mouse monoclonal Antibody

Batch prepared 10/01/2014

Immunogen aa 206-LGVPGYYHSQ-216 of second large extracellular loop

```

1  MAKDDSTVRCFQGLLIFGHVIVGMCGIALTAECIFFVSDQHSLYPLLEATNDDIFGAAWIGMFGVICLFLSVLAIVGI  80
      TM1                                TM2
81  MKSNRKILLAYFIMMFIVYGFVASCITAATQRDFFTTNLFKQMLMRYQNNSPPTNDDEWKNNGVTKTWDRMLQDHCC  160
      TM3
161  GVNGPSDWQKYTSAFRVENNDADYPWPQRCCVMDKLKEPLNLDACKLGVPGYYHSQGCYELISGPMDRHAWGVAVWFGFAI  240
      2N23                                TM4
241  LCWTFWVLLGTMFYWSRIEY  260
  
```

Isotype IgG

Antigen species Mouse

Species reactivity mouse, human

Volume 100 ul (concentrated supernatant)

Application Notes

Immunofluorescence-paraffin: 1/10-50*

Western blot: 1/100-500 dilution*

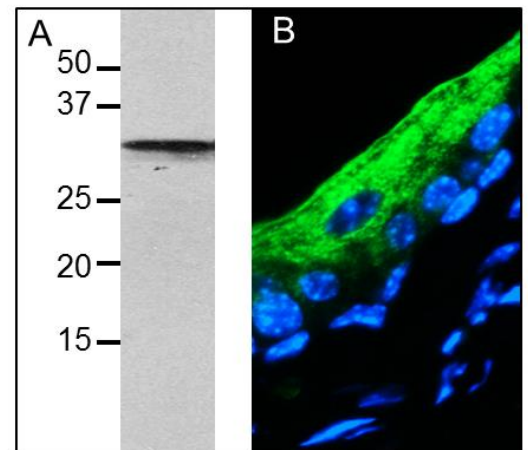
* Optimal dilutions should be determined by the user.

Storage Instructions

Store at 4°C. For long-term storage, aliquot and store at -20°C.

Reference & Publications

Unpublished



- A. Western blot analysis of total cell lysate from mouse bladder urothelium using UPIb (Clone 2N23) Mouse MAb.
- B. Immunofluorescence (IF) analysis of formaldehyde-fixed, paraffin-embedded mouse bladder using UPIb (Clone 2N23) Mouse MAb.