

UPIIIb-1 (Clone C358)

6/17/2016

Description Mouse monoclonal Antibody

Batch prepared 03/24/2014

Immunogen aa 174–NPIY^{LH}QGKNPNSID–188

1 MVRTRWQPHPPPLLLLLLVLVWLPQSLSLDLIAYVPQITAWDLEGKITATTFSLQPRCVFDEHVSTKDTIWLVVAFSNAS 80
81 RDFQNPQTAAKIPTFPQLLTDGHYMTLPLSLDQLPCEDLTGGSGGVFVLRVGNDFGC YQRPYCNAPLPSQGPYSVKF 157
158 LVMDAAGPPKAETKWS **NPIYLHOGKNPNSID** TWPGRRSGCMIVITSILSALAGLLLLAFLAASTRFSSLLWPEEAPEQL 237
C358 TM
238 RIGSFMGKRYMTHHIPSEAAATLPVGCEPGLDPLPSLSP 276

Isotype IgG

Antigen species Mouse

Species reactivity Mouse

Volume 100 ul (concentrated supernatant)

Application notes

Immunofluorescence: 1/50 to 1/100 dilution*

Western blot: 1/500-1/1000 dilution*

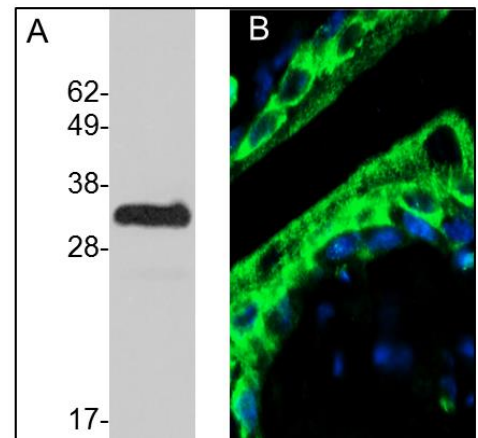
* Actual optimal dilutions depend on the sensitivity of the assay and should be determined by the end user.

Storage Instructions

Store at -20°C.

Reference & Publications

Unpublished



- A. Western blot analysis of total cell lysate from mouse bladder urothelium using UPIIIb (Clone C362) Mouse MAb.
- B. Immunofluorescence (IF) analysis of formaldehyde-fixed, paraffin-embedded mouse bladder using UPIIIb (Clone C362) Mouse MAb.